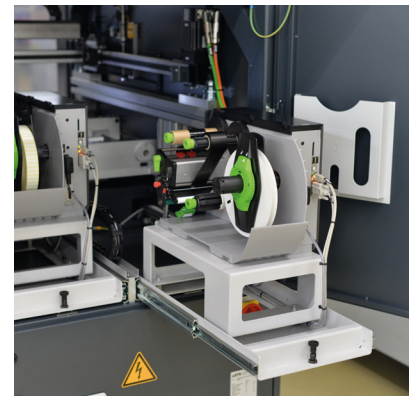
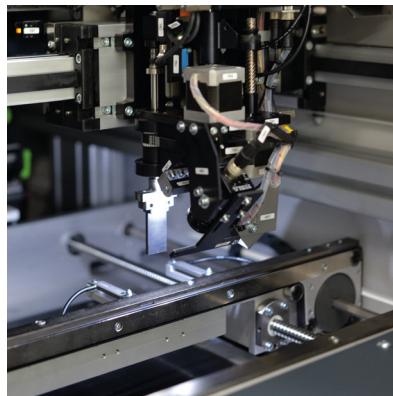


INSIGNUM 3000 Label



Description

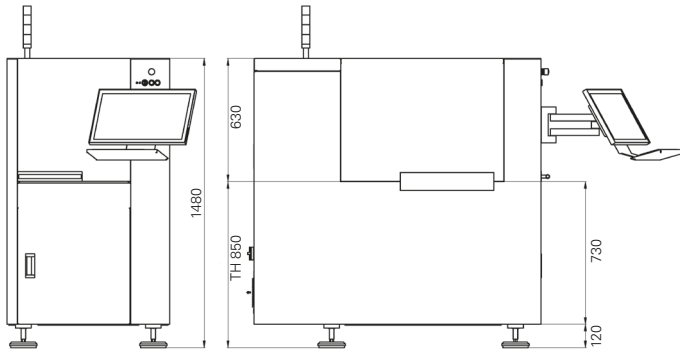
The Label applicator, INSIGNUM 3000 Label, consists of a servo driven X/Y axle, a rotating application head and a conveyor with positioning mechanism to pick up and place the PCBs. The PCB is transferred with a conveyor into the application area. The X/Y axle moves the application head to the printer, a label is taken and then applied to the PCB. After the application process the PCB is released and then transferred to the following unit.

Features

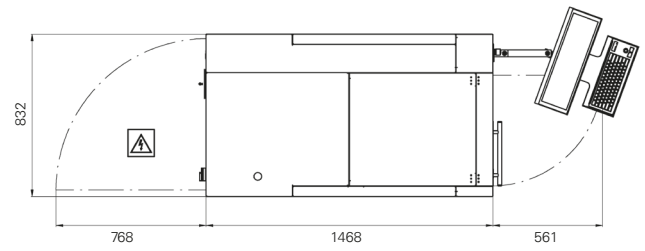
- _ PC controlled unit
- _ Windows operator guidance
- _ High performance servo drive
- _ Printer slides out for easy maintenance
- _ For barcodes and data matrix labels
- _ Thermal transfer printer

Options

- _ Offline programming
- _ Rotating applicator head $\pm 360^\circ$
- _ Print control possible after application
- _ Database integration possible
- _ Traceability
- _ Optical correction unit: CCD camera
- _ Second thermal transfer printer



Top view:



INSIGNUM 3000 Label

Machine configuration

Transport height	850 mm ± 50 mm
Max. transport width	460 mm
Interface	Siemens, SMEMA
Transfer direction	From left to right/from right to left
Operating side	Front of the machine
Fixed rail	Front of the machine

Panel dimensions

Panel length	70 to 508 mm
Panel width	50 to 460 mm
Panel thickness	0.8 to 4.0 mm
Panel weight	to 3 kg
Component height	± 40 mm

Installation requirements

Power supply	230V/115V, 50/60 Hz, ± 10 %
Power supply system	L1 + N + PE
Power consumption	0.69 kW
Air supply	6 bar
Air consumption	<10 NI/min

Machine description

Length × width × height	830 × 1470 × 1480 mm
Weight	Approx. 553 kg
Noise level	< 75 dB

Upgrades

Machine networking via IC Net

**ASYS
GROUP**

ASYS Automatisierungssysteme GmbH
Benzstrasse 10,
89160 Dornstadt, Germany
Tel (+49) 7348 9855 0
Fax (+49) 7348 9855 91
info@asys-group.com

For more information visit
www.asys-group.com

Subject to change without notice.
Some general descriptions and performance characteristics may not be applicable to all products. Technical specifications are subject to change without notice. Only features and technical data provided in purchasing contract are legally binding.

Printed in Germany