



SIPLACE SX

Maximum flexibility for the Integrated Smart Factory

ASM PLACEMENT portfolio

The Midspeed Allrounder



E by SIPLACE

45,300 components / hour
120 x 8 mm feeder slots
50 x 50 – 1,200 x 460 mm
Footprint: 2.5 m²



Maximum Flexibility



SIPLACE SX

86,500 components / hour
120 x 8 mm feeder slots
50 x 50 – 1,525 x 560 mm
Footprint: 4.2 m²



Maximum Capacity



SIPLACE X S

172,000 components / hour
160 x 8 mm feeder slots
50 x 50 – 850 x 685 mm
Footprint: 5.0 m²



Maximum Performance



SIPLACE TX

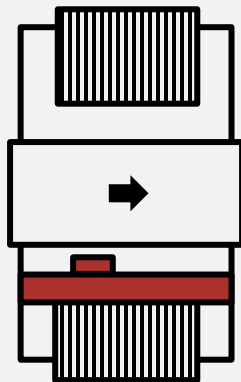
96,000 components / hour
80 x 8 mm feeder slots
50 x 50 – 550 x 460 mm
Footprint: 2.35 m²





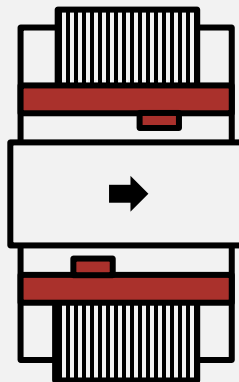
Configurable to your needs

ONE Gantry



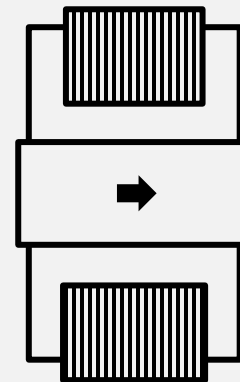
43,250 components / hour
120 x 8 mm feeder slots

TWO Gantries



86,500 components / hour
120 x 8 mm feeder slots

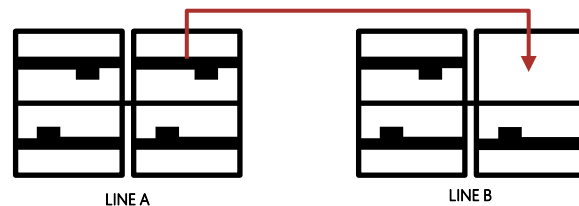
NO Gantries



0 components / hour
120 x 8 mm feeder slots



- Revolutionary design of gantry guidance
- Intelligent gantries with locally stored calibration data
- Adjustable performance without rearranging your lines



LINE A

LINE B



Three heads to cover all your needs

SIPLACE SpeedStar (CP20 P2)



48,000 components / hour
0201 (metric) - 8.2 x 8.2 x 4 mm
25 μ m @ 3 σ / 0.5 N - 4.5 N / 1 g

SIPLACE MultiStar (CPP)



25,500 components / hour
01005 (inch) - 50 x 40 x 15.5 mm
35 μ m @ 3 σ / 1.0 N - 15 N / 20 g

SIPLACE TwinStar (TH)

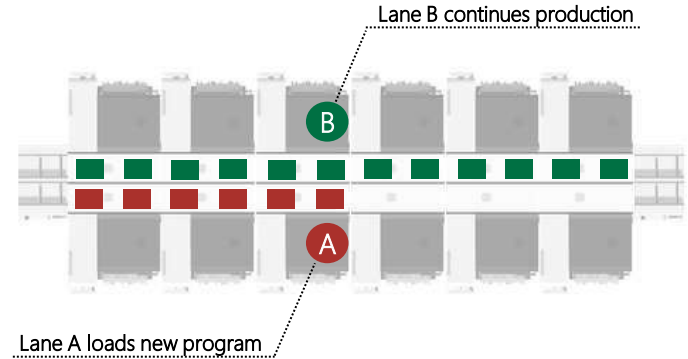
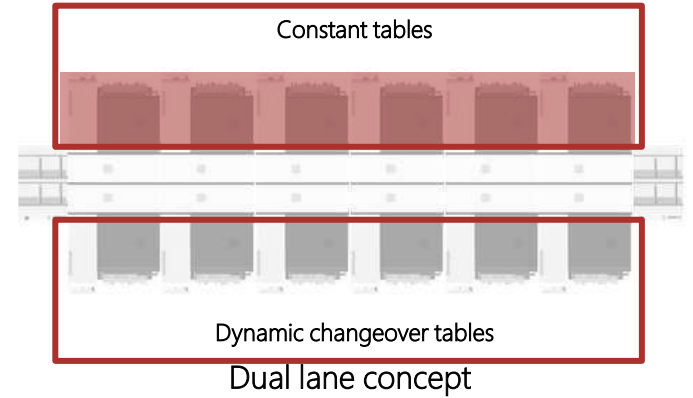


5,500 components / hour
0201 (inch) - 200 x 125 x 25 mm
22 μ m @ 3 σ / 1.0 N - 30 N / 160 g



- Flexible SIPLACE dual-lane conveyor

- Innovative setup concepts





Highest placement quality



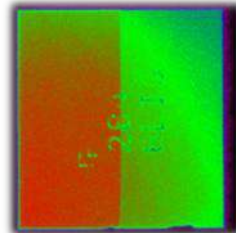
- Individual inspection of each component
- Laser component sensor
- Blue light illumination for higher vision contrast
- Component chipping and crack detection



Red Light

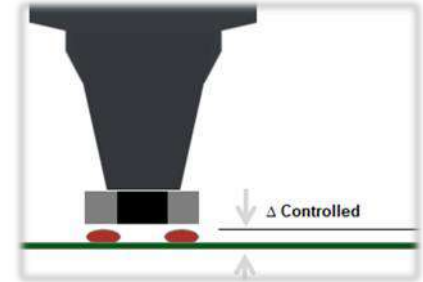
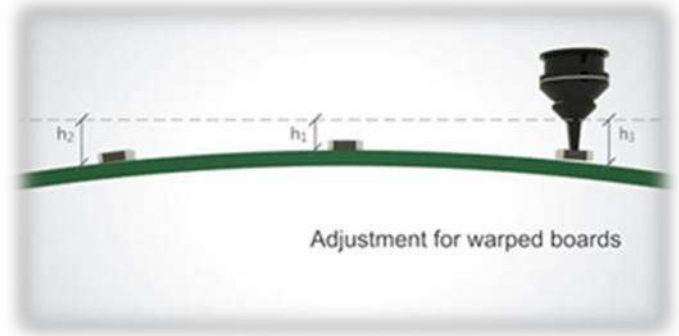


Blue Light



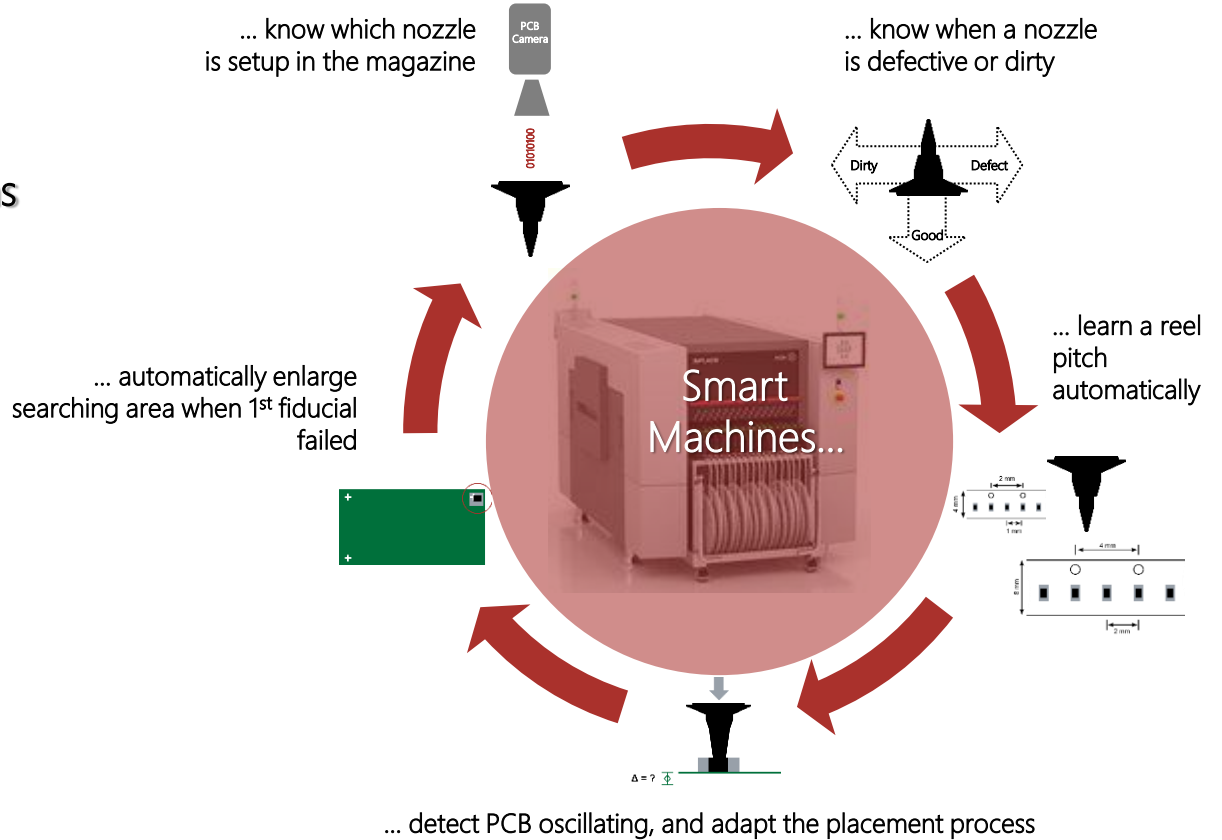


- Self-learning of component height and PCB warpage
- Low-force and touchless placement process
- Component pin-1 recognition





Integrated closed loop functions





Ease of use

User-friendly machine user interface



Optimized machine design for best accessibility and serviceability



Smart operator guidance for fast and efficient assist



Easy integration



**Critical
manufacturing**
an ASM PT company



IPC
CFX

ASMOIB



Open interfaces to ASM systems and other equipment

- Fully integrated into ASM line and factory software solutions
- Process and maintenance data interface
- Open standards: IPC-HERMES-9852 / IPC-CFX
- MES connection via ASM OIB



Line Operations Package

Advanced functions for setup changeovers and line operations



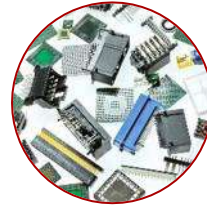
Smart Pin Support

Automatic support pin placement reduces operator workload and prevents errors



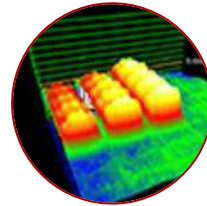
Waffle Pack Changer

Flexible non-stop replenishment of trays during production



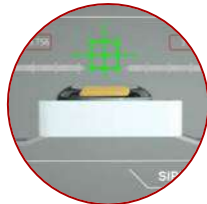
OSC Package

Advanced functions for reliable placement of exotic components



On board PCB inspection

Utilize the PCB camera to inspect the board before and/or after placement



LED Centering

Align LEDs at the precise center based on top side feature recognition



SIPLACE MeasuringFeeder X

Checks electrical values of components such as capacitors, resistors, inductance and diodes (polarity)



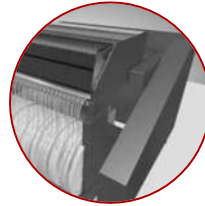
SIPLACE PowerConnector X

Compact power supply for handling feeders at the line without stopping production



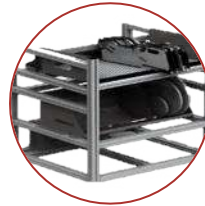
SIPLACE GlueFeeder X

Dispenses the adhesive directly onto the component from below



Docking Station

Online verification of complete setup tables in the preparation area



Active Feeder Rack

Active storage solution for frequently used components to prevent unnecessary teardown



Nozzle Cleaning Station

Fully automated cleaning station for complete magazines and nozzles

SIPLACE SX+	SIPLACE SX1	SIPLACE SX2
		
Added feeder capacity	Flexible production	High-speed production

Technical data*	SIPLACE SX1	SIPLACE SX2
Placement speed**	43,250 cph	86,500 cph
Placement speed (IPC)	33,000 cph	66,000 cph
Feeder capacity	120 × 8 mm slots	
Component spectrum	0201 (metric) to 200 mm × 125 mm × 50 mm	
Board size	50 mm × 50 mm to 1,525 mm × 560 mm	
Machine dimensions (L x W x H)	1.5 m × 2.8 m × 1.8 m	
Placement heads	SpeedStar (CP20P2), MultiStar (CPP), TwinStar (TH)	
Placement accuracy	22 μm @ 3 σ (with TwinStar)	
Conveyors	Single-track conveyor, flexible dual-track conveyor	

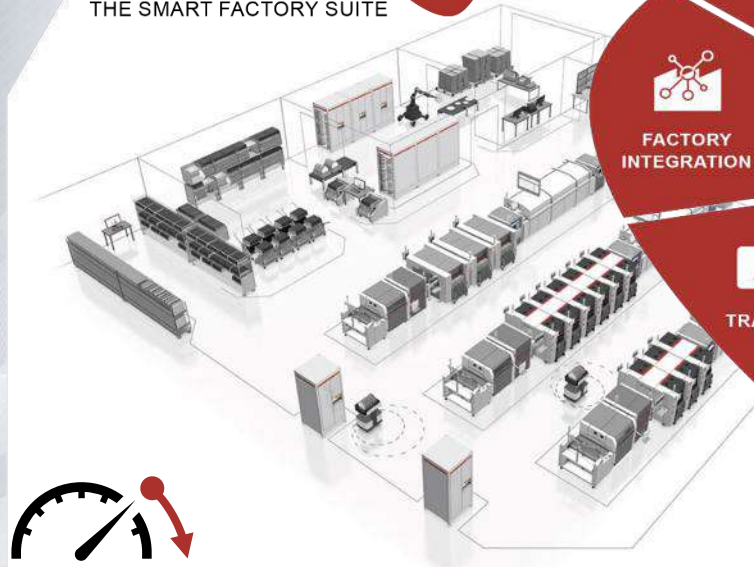


* Performing professional maintenance in the scope and intervals recommended by ASM ensures that your SIPLACE equipment will deliver the specified performance and accuracy across its entire life cycle. Our maintenance contracts make this job even easier for you.

** SIPLACE benchmark

One more thing: ASM WORKS

ASM WORKS THE SMART FACTORY SUITE



ASM Works Core Package

Ideal starter package enabling the Integrated Smart Factory

Upgrade Modules

Upgrade your focus areas and use data to maximize productivity



Bring your factory to the next level

