



SIPLACE TX

Maximum performance for the Integrated Smart Factory

## ASM PLACEMENT portfolio

### The Midspeed Allrounder



#### E by SIPLACE

45,300 components / hour  
120 x 8 mm feeder slots  
50 x 50 – 1,200 x 460 mm  
Footprint: 2.5 m<sup>2</sup>



### Maximum Flexibility



#### SIPLACE SX

86,500 components / hour  
120 x 8 mm feeder slots  
50 x 50 – 1,525 x 560 mm  
Footprint: 4.2 m<sup>2</sup>



### Maximum Capacity



#### SIPLACE X S

172,000 components / hour  
160 x 8 mm feeder slots  
50 x 50 – 850 x 685 mm  
Footprint: 5.0 m<sup>2</sup>



### Maximum Performance



#### SIPLACE TX

96,000 components / hour  
80 x 8 mm feeder slots  
50 x 50 – 550 x 460 mm  
Footprint: 2.35 m<sup>2</sup>

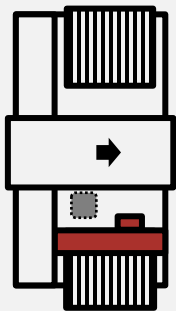




## Configurable to your needs

### SIPLACE TX1

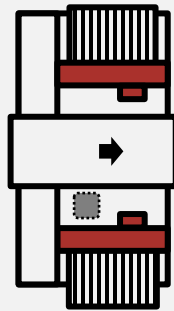
Single Gantry



44,000 components / hour  
80 x 8 mm feeder tracks

### SIPLACE TX2

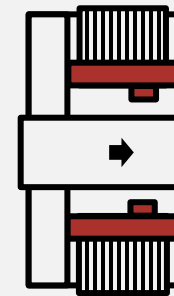
Dual Gantry



85,500 components / hour  
80 x 8 mm feeder tracks

### SIPLACE TX2i

Dual Gantry – High Speed

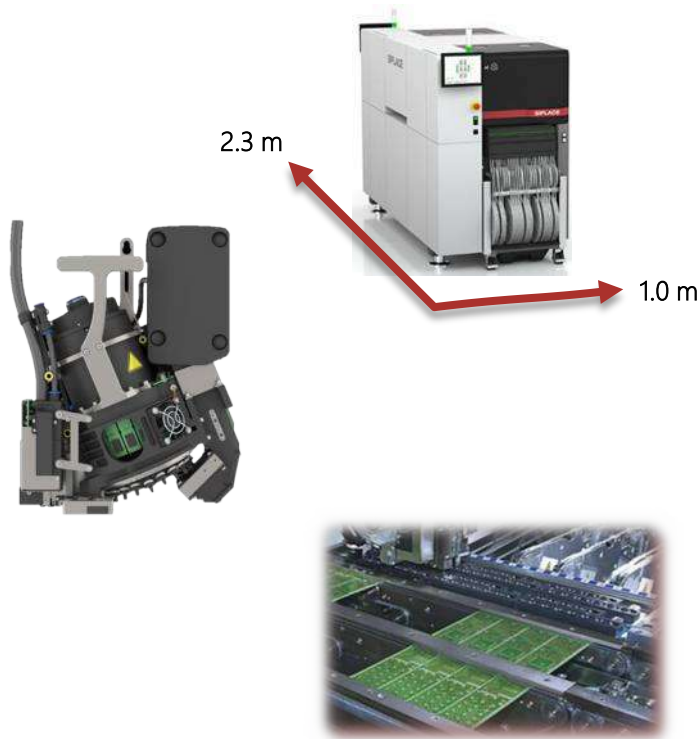


96,000 components / hour  
80 x 8 mm feeder tracks





- Optimized machine design with small footprint
- Very high-speed head SIPLACE SpeedStar (CP20 P2)
- Dual-lane placement concept for best line throughput





## Highest placement quality

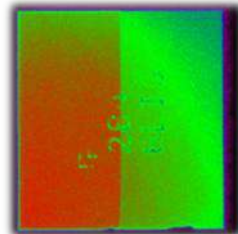
- Individual inspection of each component
- Laser component sensor
- Blue light illumination for higher vision contrast
- Component chipping and crack detection



Red Light



Blue Light





## Three heads to cover all your needs

SIPLACE SpeedStar (CP20 P2)



48,000 components / hour  
0201 (metric) - 8.2 x 8.2 x 4 mm  
25µm @ 3σ / 0.5 N - 4.5 N / 1 g

SIPLACE MultiStar (CPP)



25,500 components / hour  
01005 (inch) - 50 x 40 x 15.5 mm  
35µm @ 3σ / 1.0 N - 15 N / 20 g

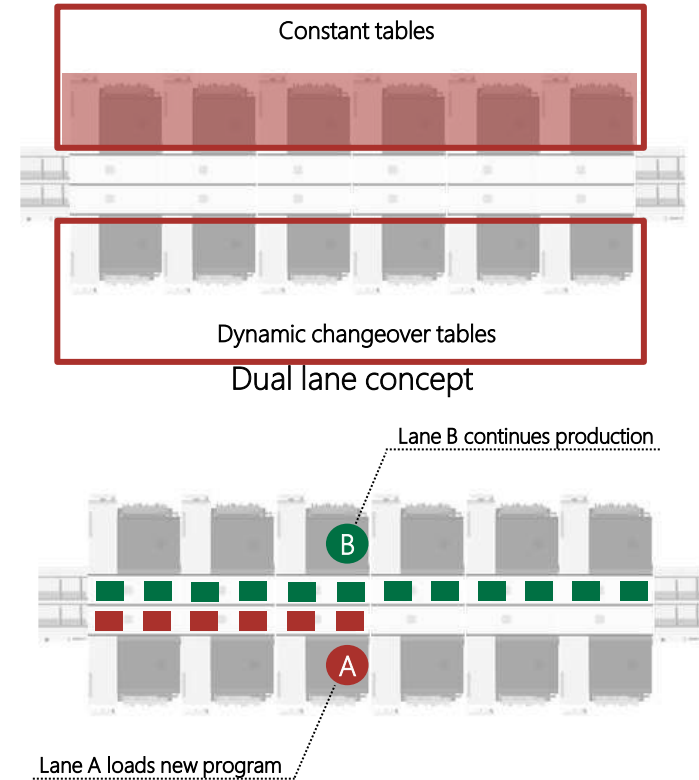
SIPLACE TwinStar (TH)



5,500 components / hour  
0201 (inch) - 200 x 125 x 25 mm  
22µm @ 3σ / 1.0 N - 30 N / 160 g

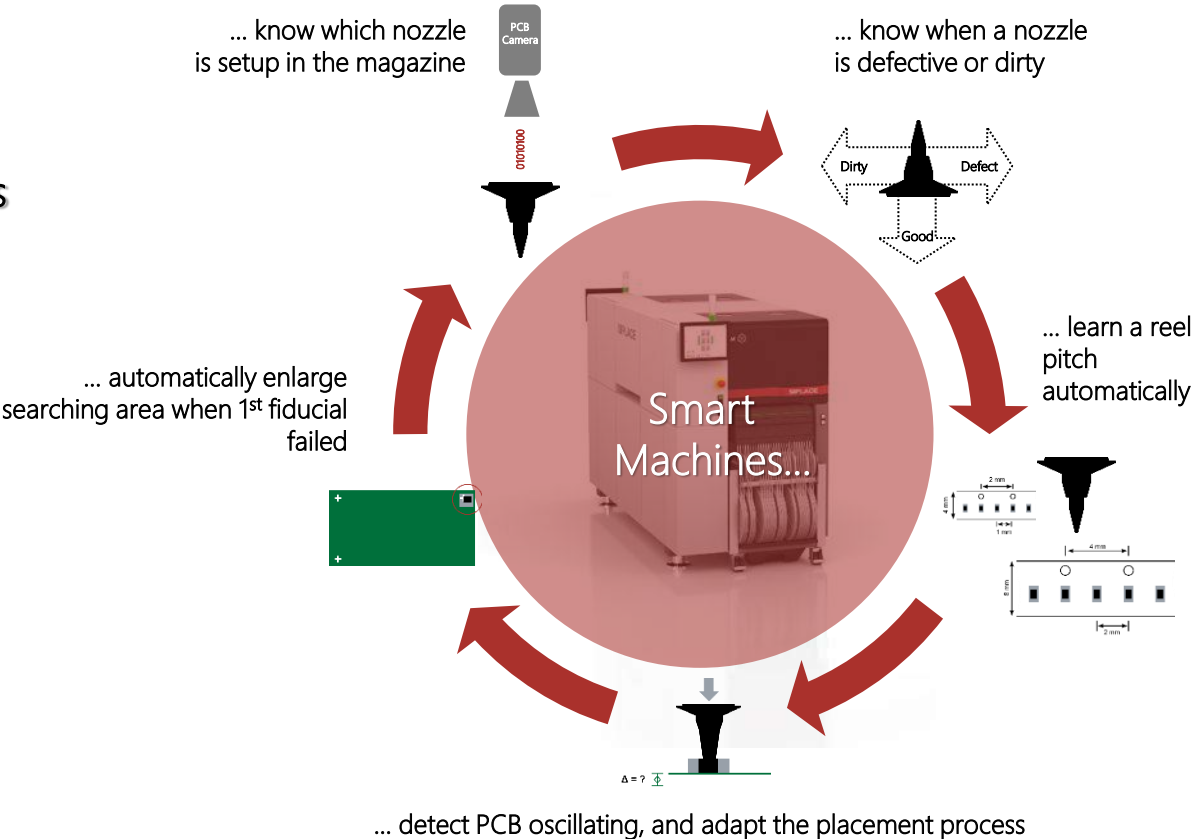


- Flexible SIPLACE dual-lane conveyor
- Innovative setup concepts





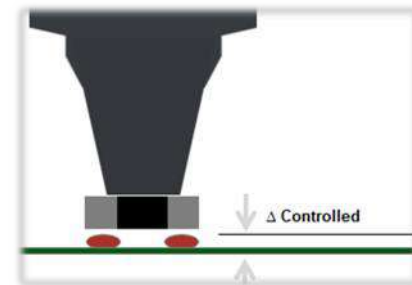
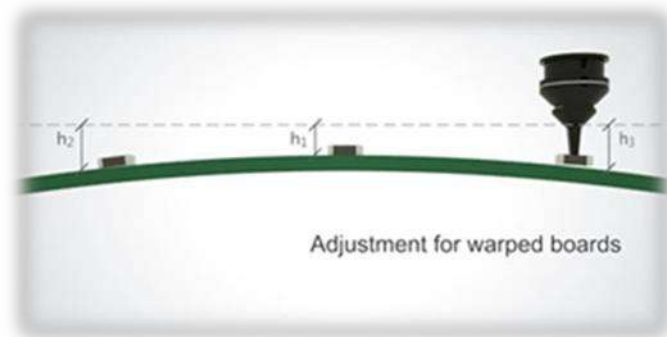
Integrated closed loop functions







- Self-learning of component height and PCB warpage
- Low-force and touchless placement process
- Component pin-1 recognition





Optimized machine design for best accessibility and serviceability



## Smart operator guidance for fast and efficient assist





Easy integration



**Critical  
manufacturing**  
an ASM PT company



**ASM OIB**



IPC-HERMES-9852

## Open interfaces to ASM systems and other equipment

- Fully integrated into ASM line and factory software solutions
- Process and maintenance data interface
- Open standards: IPC-HERMES-9852 / IPC-CFX
- MES connection via ASM OIB



## Line Operations Package

Advanced functions for setup changeovers and line operations



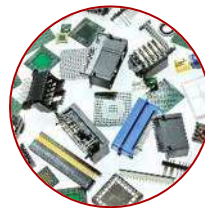
## Smart Pin Support

Automatic support pin placement reduces operator workload and prevents errors



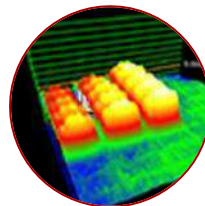
## SIPLACE Jedec Tray Feeder

Flexible non-stop replenishment of trays during production



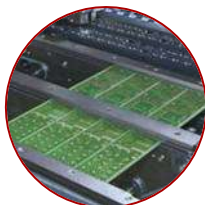
## OSC Package

Advanced functions for reliable placement of exotic components



## On board PCB inspection

Utilize the PCB camera to inspect the board before and/or after placement



## Long board option

Placing boards with lengths of up to 550 mm



### SIPLACE MeasuringFeeder X

Checks electrical values of components such as capacitors, resistors, inductance and diodes (polarity)



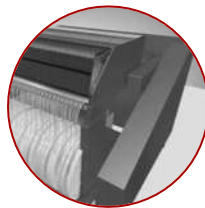
### SIPLACE PowerConnector X

Compact power supply for handling feeders at the line without stopping production



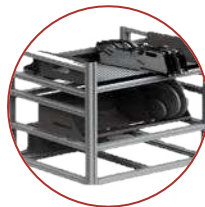
### SIPLACE GlueFeeder X

Dispenses the adhesive directly onto the component from below



### Docking Station

Online verification of complete setup tables in the preparation area



### Active Feeder Rack




Active storage solution for frequently used components to prevent unnecessary teardown



### Nozzle Cleaning Station

Fully automated cleaning station for complete magazines and nozzles

# Technical specification

Technical data		SIPLACE TX1	SIPLACE TX2	SIPLACE TX2i
Gantry configuration				
	Benchmark performance	44,000 cph	85,500 cph	96,000 cph
	IPC Performance	36,100 cph	72,300 cph	79,000 cph
	Feeder capacity	80 × 8 mm tracks		
	Component range (L x W   H)	0.12 mm × 0.12 mm to 200 mm × 125 mm × 25 mm		0.12 mm × 0.12 mm to 27 mm × 27 mm × 4 mm*
Board size (L x W)		50 mm × 45 mm to 550 mm** × 460 mm		
Machine dimensions (L x W x H)		1.0 m × 2.35 m × 1.45 m		1.0 m × 2.23 m × 1.45 m
Placement heads		SpeedStar (CP20P2)	MultiStar (CPP)	TwinStar (TH)
Placement accuracy		25 µm @ 3 σ	35 µm @ 3 σ	22 µm @ 3 σ
Conveyors		Flexible dual-lane conveyor		

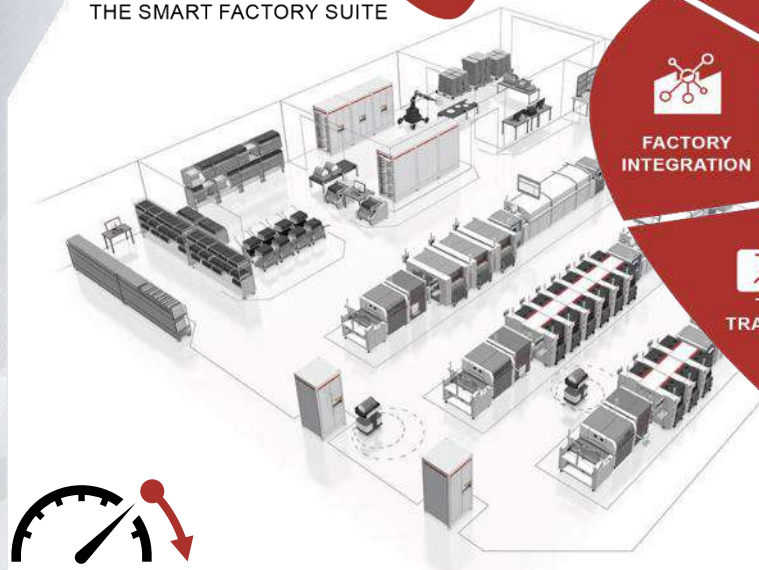


\* Maximum height 2mm with SIPLACE SpeedStar head (CP20P2)  
 \*\* With Long Board Option (without LBO, maximum board length 375 mm)



# One more thing: ASM WORKS

## ASM WORKS THE SMART FACTORY SUITE



Bring your factory to the next level



### ASM Works Core Package

Ideal starter package  
enabling the Integrated  
Smart Factory

### Upgrade Modules

Upgrade your focus  
areas and use data to  
maximize productivity

