

VEGO Dynamic STM 03



STM 03 Shuttle module

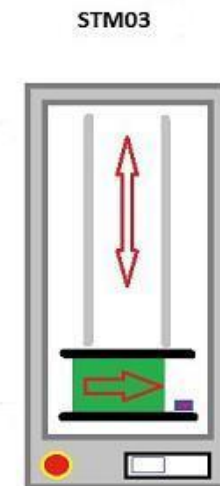
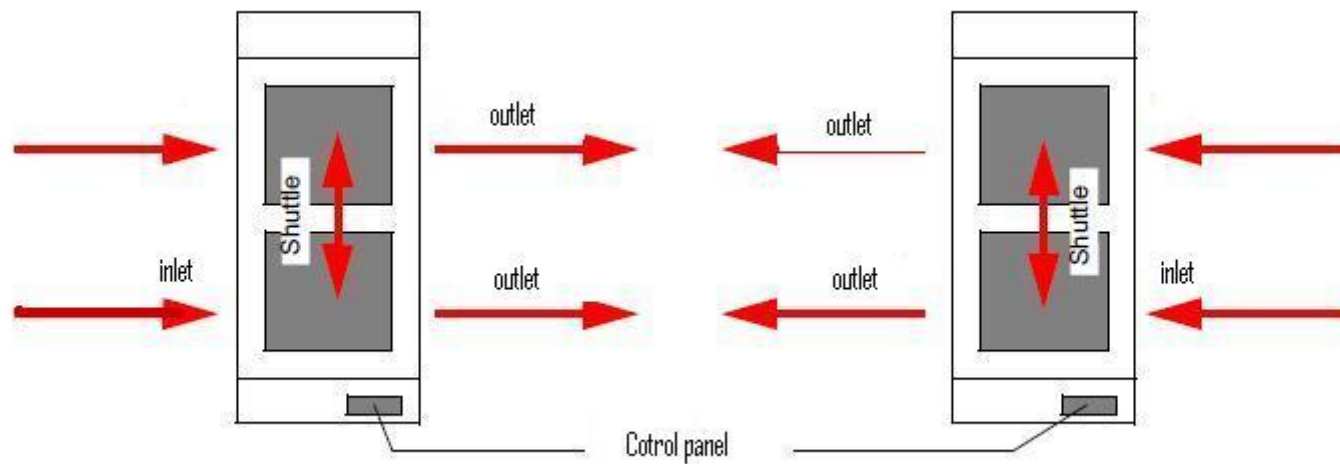
The STM 03 shuttle is designed for insertion and removal of PCB's from two production lines as well as lateral displacement. Incoming PCB's are taken over by the integrated conveyor segment, moved laterally and handed over to the next machine. The takeover and handover positions are freely programmable.



Operating mode

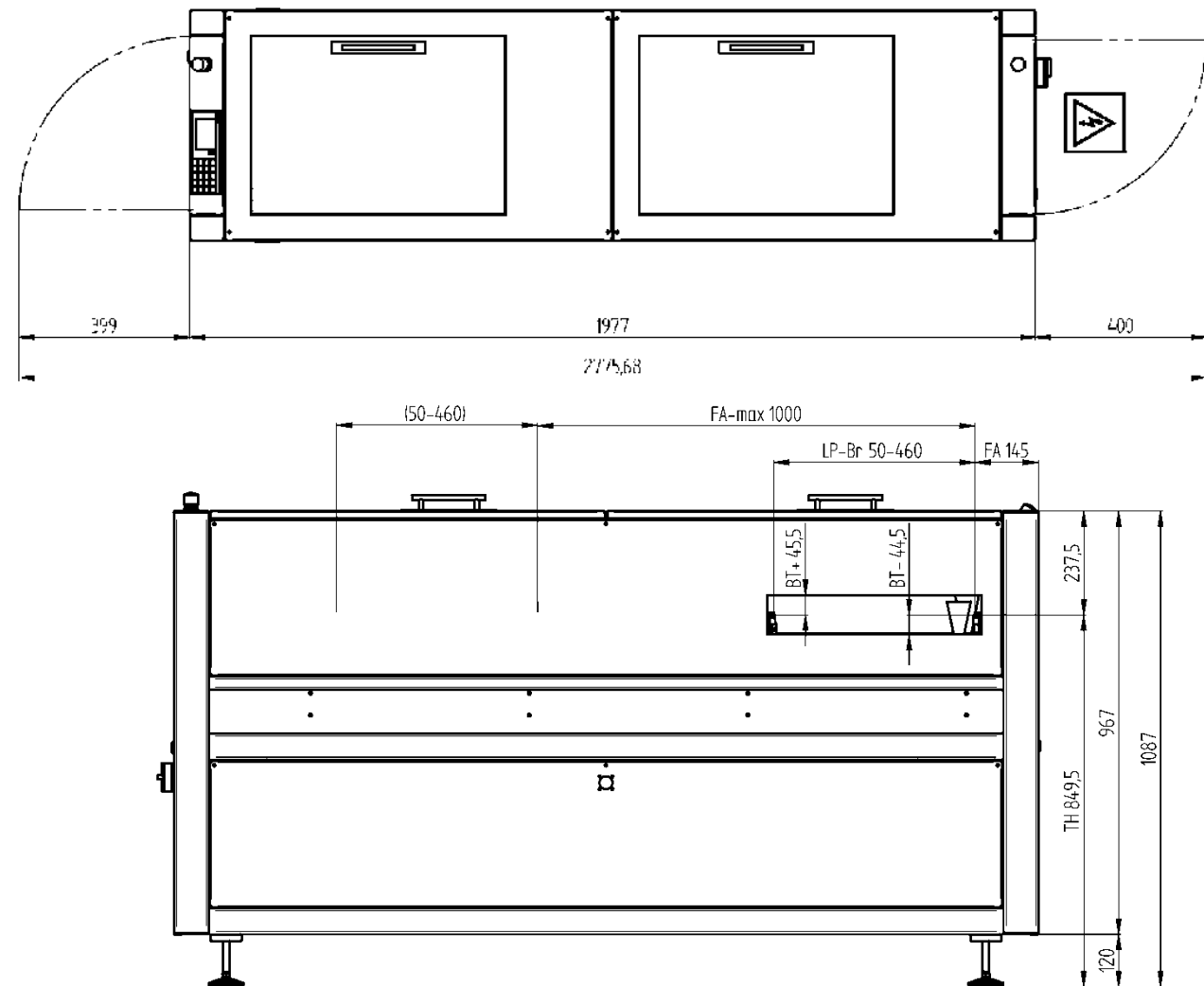
- › Different travel paths possible
- › All 4 takeover and handover positions are adjustable

for example: 2 x inlet, 2 x outlet



Technical Specification STM 03 – 1000;2000;3000;4000

Length	540 mm
With	1970 mm /1000 2970 mm/ 2000 3970 mm/ 3000 4970 mm/ 4000
Height	960 mm
PCB width	70 - 460 mm
PCB height	50 - 460 mm
Transport height	850 mm +/- 50 mm (950 mm +/- 50 mm option)
Cycle time	~ 10 - 25 sec.



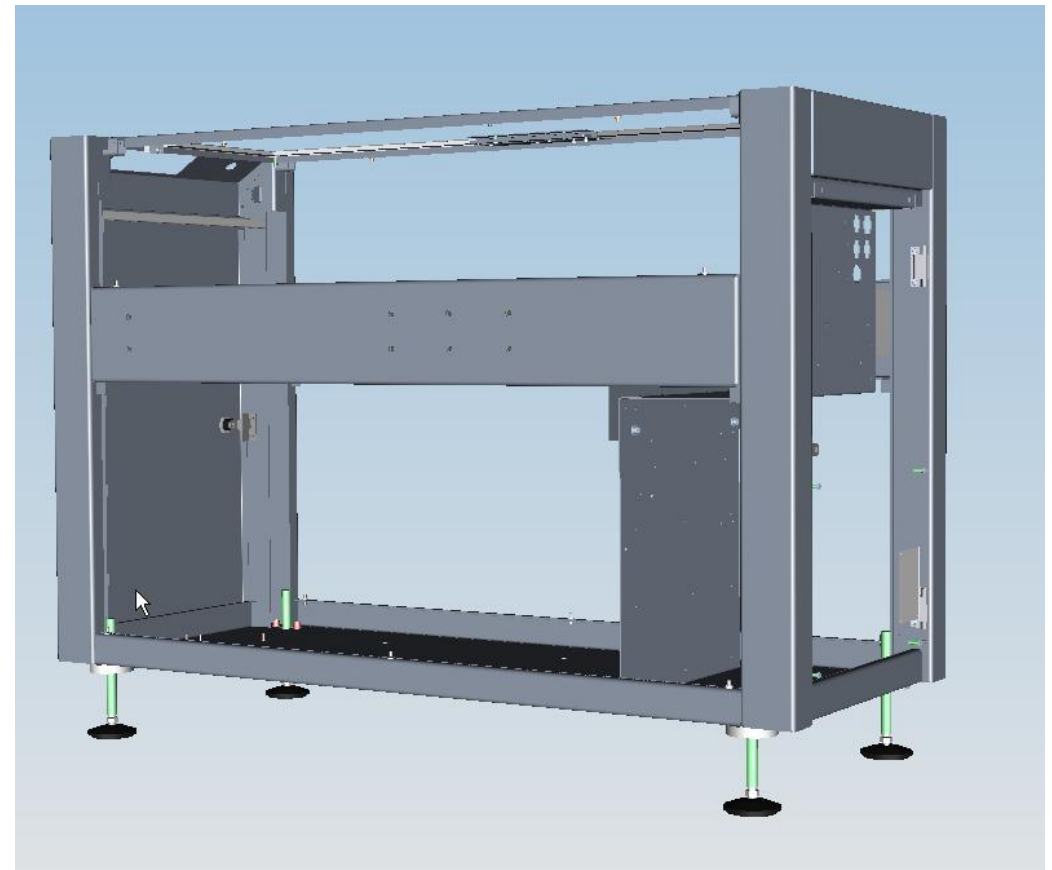
Operation

- › Operator panel with graphical color display
- › Setup of the machine during production
- › Password-protected user levels (configurable)
- › Product memory function



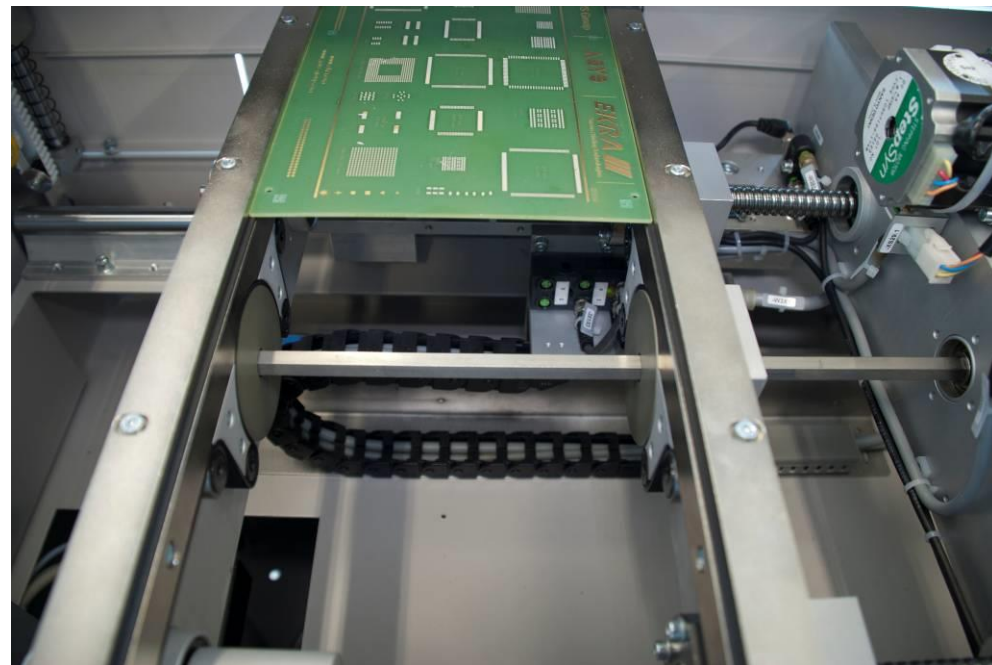
Frame

- › Robust steel tubing frame
- › Complete ESD powder coating



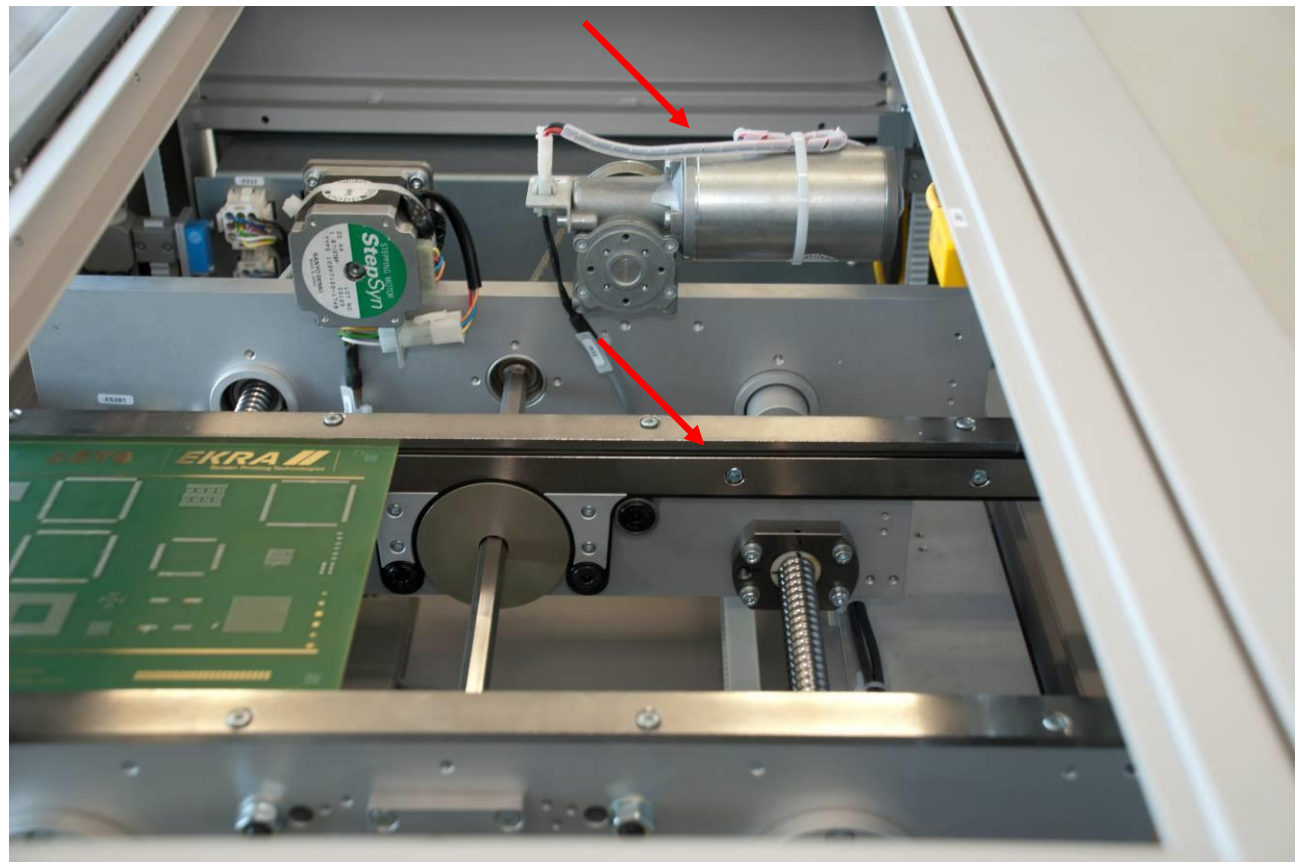
Mechanic

- › Mechanic built from anodized aluminium
- › High quality and long lasting mechanical components



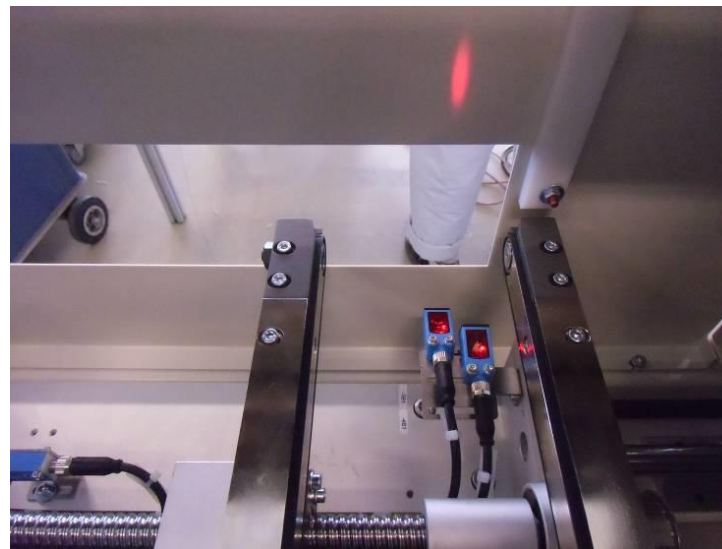
Conveyor

- › 24V DC- drive motor
- › ESD transport belt



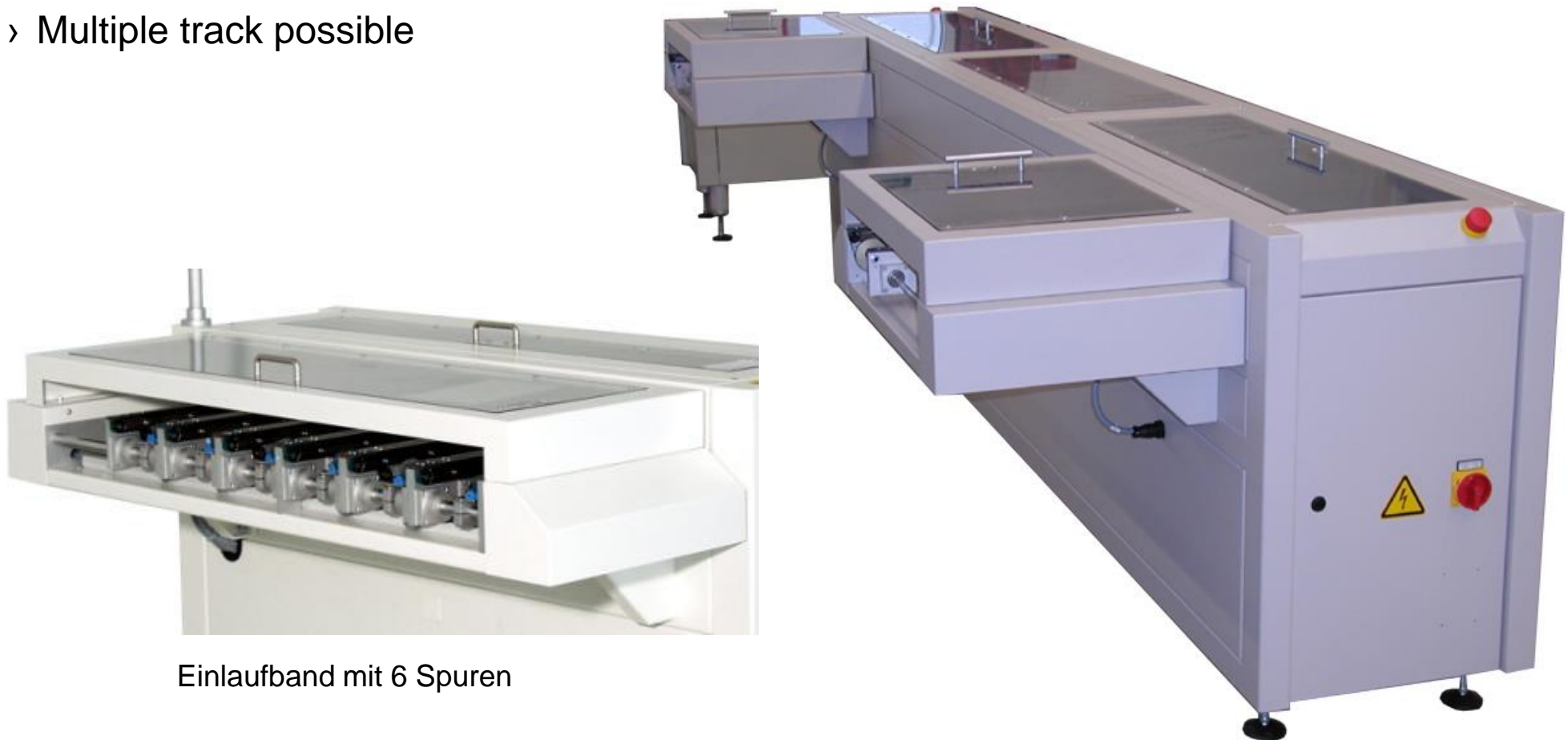
Shuttle

- › Stepper motor with motion control
- › Programmable handover/takeover positions
- › Different travel paths possible
- › Travel speed up to 400mm/min
- › Sensors for gap monitoring



Option In – outlet conveyor

- › In– and/or outlet conveyor
- › Multiple track possible

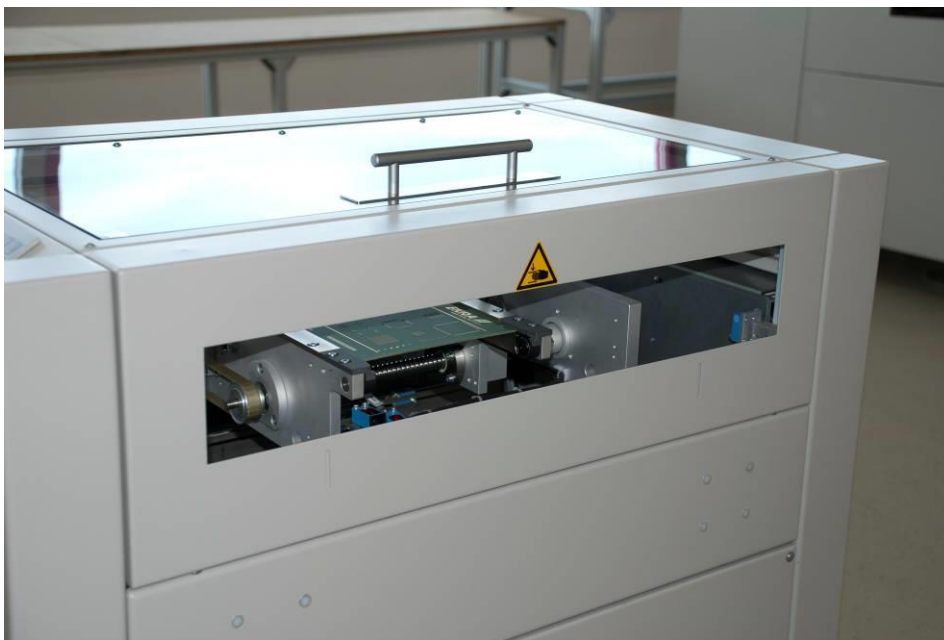


Einlaufband mit 6 Spuren

Option Shutter

- › Pneumatic safety- shutter at the Inlet and outlet

shutter open



shutter closed



Automatic width adjustment (option)

- › Width adjustment by electrically driven spindles
- › Automatic width adjustment by setting absolute position at the operator panel



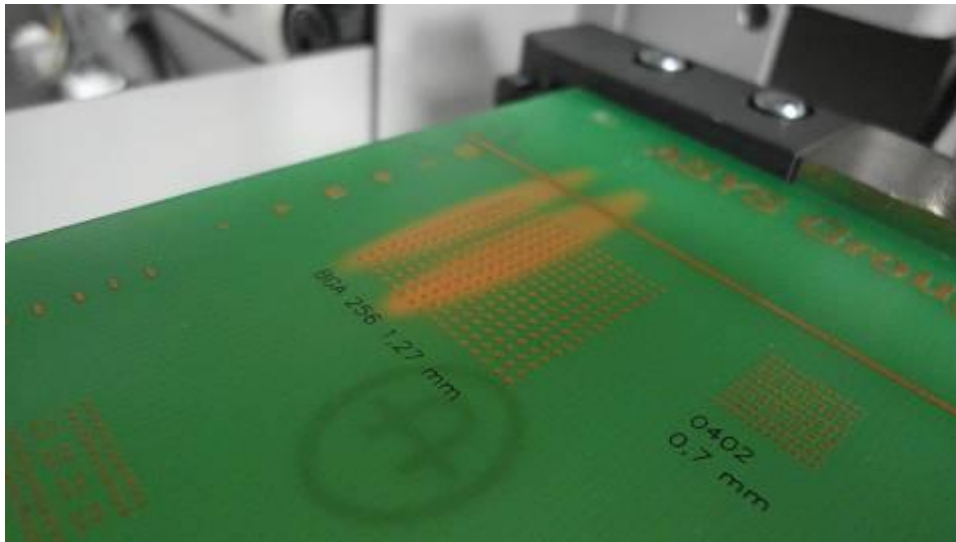
Electric

- › Control cabinet door with double-bit lock
- › Main switch on machine backside can be used as emergency stop



Sensing

- › High quality, multi beam light sensors in the shuttle and in the inlet/outlet conveyors, for reliable recognition of PCBs with cut-outs



PCB detection