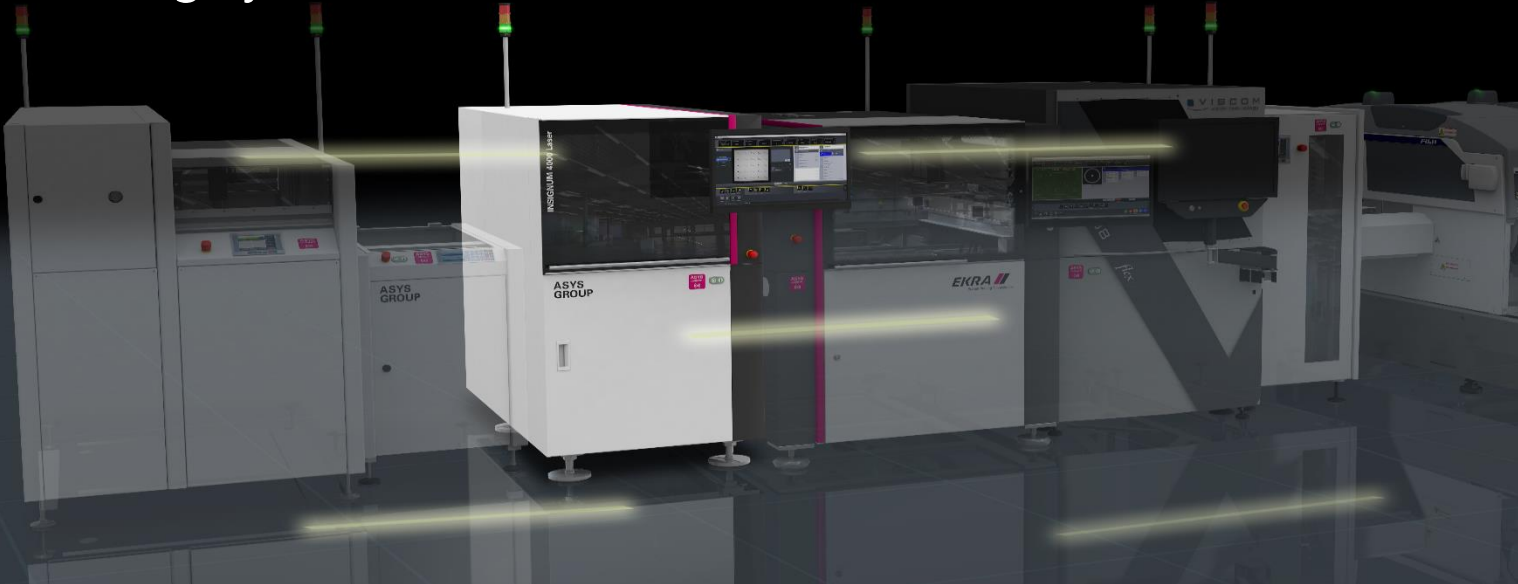


INSIGNUM 1000 Scan



INSIGNUM label Marking Systems



Group INSIGNUM

worldwide more than 6000 installed
Systems & ERP/MES- Connections



Scanning
System(s)

Label
System(s)

label Marking
System(s)

INSIGNUM 3000 Scan – Specification

	Typ 1 Length 530 mm	Typ 2 Length 600 mm	Typ 3 Length 790 mm
Machine configuration			
Transport height	920 mm ± 50 mm	920 mm ± 50 mm	920 mm ± 50 mm
Max. transport width	460 mm	460 mm	460 mm
Interface	SMEMA	SMEMA	SMEMA
Scan area above	300 × 460 mm	370 × 460 mm	460 × 460 mm
Scan area below	260 × 460 mm	330 × 460 mm	460 × 460 mm
Transfer direction	From left to right / from right to left	From left to right / from right to left	From left to right / from right to left
Operating side	Front of the machine	Front of the machine	Front of the machine
Fixed rail	Front of the machine	Front of the machine	Front of the machine
Panel dimensions			
Panel length	70 to 460 mm	70 to 530 mm	70 to 720 mm
Panel width	50 to 460 mm	50 to 460 mm	50 to 460 mm
Panel thickness	0.8 to 4.0 mm	0.8 to 4.0 mm	0.8 to 4.0 mm
Panel weight	to 3 kg	to 3 kg	to 3 kg
Installation requirements			
Power supply	230 V / 115 V, 50 / 60 Hz, ± 10%	230 V / 115 V, 50 / 60 Hz, ± 10 %	230 V / 115 V, 50 / 60 Hz, ± 10 %
Power supply system	L1 + N + PE	L1 + N + PE	L1 + N + PE
Power consumption	0.34 kW	0.34 kW	0.34 kW
Air supply	6 bar	6 bar	6 bar
Air consumption	5 NI/min	5 NI/min	5 NI/min
Machine description			
Length × width × height	530 × 950 × 1165 mm	600 × 950 × 1165 mm	790 × 950 × 1165 mm
Weight	Approx. 262 kg	Approx. 267 kg	Approx. 275 kg
Noise level	< 75 dB	< 75 dB	< 75 dB



Performance Data

Typ 1

Typ 2

Typ 3

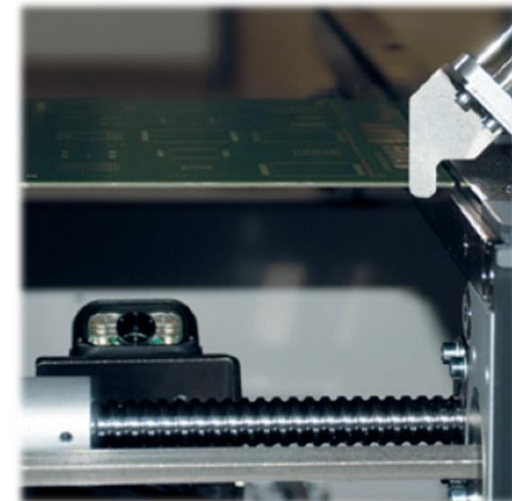
- Scan-area above: 250 × 460 mm (Typ 1), 320 × 460 mm (Typ 2), 460 × 460 mm (Typ 3)
- Scan-area below: 250 × 460 mm (Typ 1), 320 × 460 mm (Typ 2), 460 × 460 mm (Typ 3)
- Codes: for all common 2D Codes, 1D Codes
- Module-size: Module-size > 5 mil (depending on scanner type)
- Types of scanner: Microscan, Datalogic, Cognex

Caratteristiche e opzioni

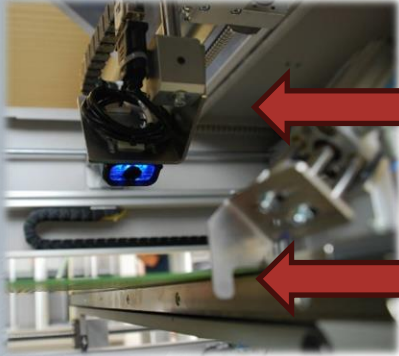
- Doppio convogliatore (opzione)
- Connessione al database (opzione)
- Ordinamento buono/difettoso (opzione)
- Ingombro minimo
- Versione XL: per PCB di lunghezza fino a 610 mm (opzione)
- Asse di scansione manuale dall'alto e dal basso/solo dall'alto o solo dal basso

Features and options

- Doubletrack (option)
- Database-connection (option)
- Good/bad sorting (option)
- Smallest footprint
- XL Version: For up to 610 mm PCB length (option)
- Manual scan axis from above and below/ only from above or only from below

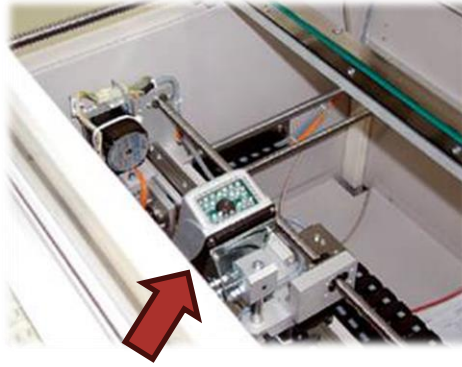


View of the INSIGNUM 3000 Scan

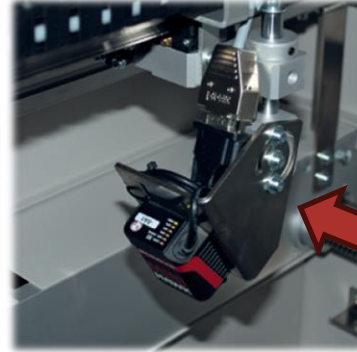


Scanner

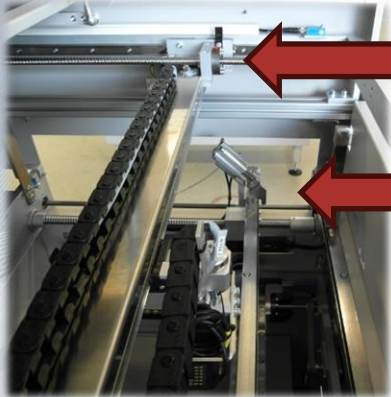
Stopper
Cylinder



Scanner from Below

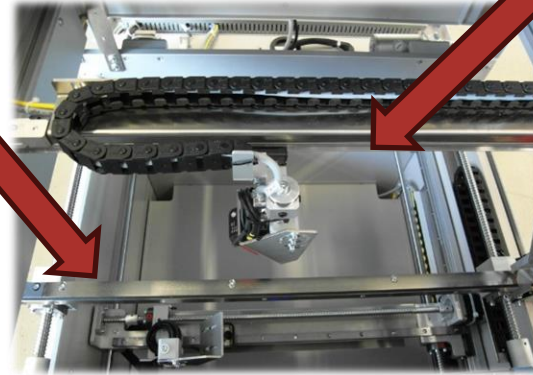


Scanner from Above



Axis system
controlled by stepper motors

Stop Unit



INSIGNUM 1000 Scan – Scanner



- Cognex Dataman,
- Datalogic Matrix 200,
- Microscan Mini as standard
- Other scanner types on request

WHAT

DO

WE

DO